

PLANWISE: for optimum task scheduling

Schedule your people more quickly and efficiently

Your organization revolves around its people and their capabilities. Would you like to optimize your business processes and business chain? Let's start here! ORTEC's PLANWISE system is just the perfect instrument, as it helps you assign tasks to the right people.

Time savings

PLANWISE Task Scheduling was developed to provide you with an overview of the availability of staff and scheduled activities at a glance. PLANWISE will relieve your planners of many time-consuming activities because all source data can be entered quickly and easily, and tasks or activities can be scheduled and registered in a structured manner. Thanks to this type of support, your planners can focus on the real scheduling work. PLANWISE automatically takes into account the availability and skills of staff members, as well as any tools they may need. Any scheduling errors are displayed automatically. As a result, you obtain reliable and up-to-date insight into your schedules and the progress of scheduled activities.

PLANWISE is a standard, multi-user solution with countless configuration options to provide your services with the best possible support. The standard interfaces let you integrate PLANWISE with other applications. Seamless information exchange between applications ensures that essential information such as the details of available people and their competences, but also more dynamic information such as schedules, customer orders, projects and work progress is available wherever it is needed.

The solution

PLANWISE is ORTEC's task scheduling solution. In task scheduling the following factors play a crucial role:

- assignment of tasks to people with the correct competences and qualifications,
- deployment of equipment or materials often plays a minor role,
- multiple tasks within a project are often interrelated and dependent on one another.



The result

Efficiency

Using PLANWISE results in the following:

- more efficient deployment of your staff,
- reduced throughput times,
- more reliable deliveries and higher levels of customer satisfaction,
- a faster and more transparent scheduling process.

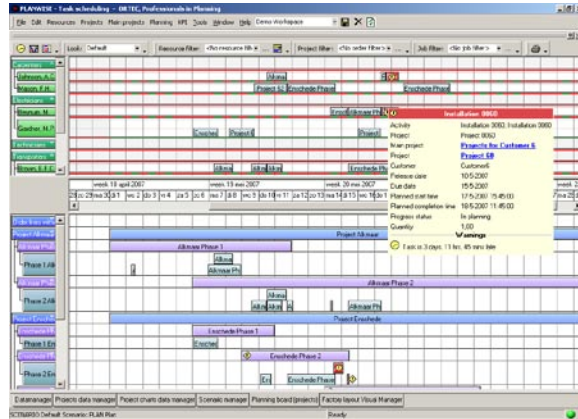
Effectiveness

PLANWISE monitors a multitude of rules that your planner may well know, but is not able to take into account at all times. Moreover, PLANWISE provides transparent insight into a wide range of scheduling consequences. This facilitates accurate scheduling that meets all of the necessary requirements such as those stated in the Working Hours Act and Collective Labor Agreement. The preconditions and the scheduling consequences automatically monitored and displayed by PLANWISE include:

- availability of people and resources,
- people's skills and qualifications,
- precedence relations between tasks,
- time frames.

Transparency

PLANWISE provides insight into scheduling and progress in a variety of ways, making order acceptance, scheduling and execution easier to manage. This places your organization in a much stronger position to respond to requirements or disruptions. Moreover, scheduling and realization details constitute a wealth of valuable management information.



Transferability

Working with PLANWISE means that your scheduling process and corresponding preconditions are well documented and safeguarded. This makes it easier to transfer your scheduling activities to staff and greatly reduces your organization's dependence on the knowledge and presence of one or a handful of planners.

About ORTEC

ORTEC is one of the largest providers of advanced planning and optimization software solutions and consulting services. Our solutions result in optimized fleet routing & dispatch, vehicle and pallet loading, workforce scheduling, delivery forecasting and network planning. ORTEC provides both best-of-breed, custom made and SAP® certified solutions, supported by strategic partnerships. ORTEC has over 800 customers worldwide, 600 employees and several offices in Europe and North America.

www.ortec.com

United States

+1 (678) 392 3100

Deutschland

+49 (0) 4431 7377 0

Nederland

+31 (0)182 540 500

België/Belgique

+32 (0)16 244 220

France

+33 (0)1 44 25 05 25

International

+31 (0)182 540 500