

PLANWISE: For an improved overview of your equipment

Generate more business through efficient deployment of your people and equipment

Increase your productivity with the same number of resources? And still make your deliveries more reliable? The only way to achieve this is by improving the efficiency in the way you deploy your equipment, people and other resources. ORTEC has the right solution – PLANWISE: for optimum deployment of your equipment and all related processes. PLANWISE provides you with insight into the current and scheduled deployment of your people, your equipment and any required accessories.

This system supports the entire scheduling process for staff, equipment and transportation. And what you gain is more efficient deployment of your equipment and people, a faster growing business and higher levels of customer satisfaction.

Faster and improved scheduling

PLANWISE Equipment Scheduling was developed to provide you with an overview of the availability of equipment and scheduled activities at a glance. PLANWISE will relieve your planners of a lot of time-consuming activities because all work location details can be entered quickly and easily, and equipment and staff can be deployed and registered in a structured manner. Thanks to this type of support, your planners can focus on the real scheduling work. PLANWISE automatically takes into account the availability and skills of members of staff, as well as any tools they may need. Any scheduling errors are displayed automatically. As a result, you obtain reliable and up-to-date insight into your schedules and the progress of scheduled activities.

PLANWISE is a standard, multi-user solution with countless configuration options to provide your services with the best possible support. The standard interfaces let you integrate PLANWISE with other applications. Seamless information exchange between applications ensures that essential information such as the details of available people and equipment, but also more dynamic information such as rosters, customer orders, projects and work progress is available wherever it is needed.

The solution

PLANWISE is ORTEC's equipment scheduling solution. In equipment scheduling the following factors play a crucial role:

- the scheduling of equipment, accessories and operators,
- equipment that is linked to a preferred machine driver,
- machines that are often scheduled for a fixed time frame at order intake,
- rapid order entry and scheduling are vital,
- specific conditions from the Working Hours Act and Collective Labor Agreement play an important role.



The result

Efficiency

Using PLANWISE results in:

- improved deployment of your capital intensive resources,
- more reliable deliveries and increased customer satisfaction,
- higher productivity,
- a faster and more transparent scheduling process,
- efficient and correct order entry.

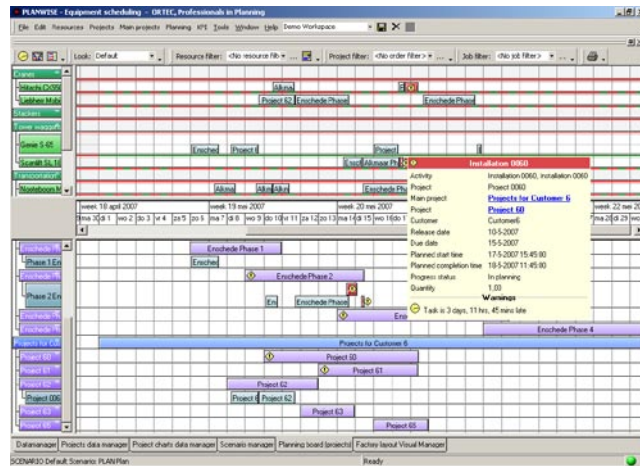
Effectiveness

PLANWISE monitors a multitude of rules that your planner may well know, but is not able to take into account at all times. Moreover, PLANWISE provides transparent insight into a wide range of scheduling consequences. This facilitates accurate scheduling that meets all of the necessary requirements. The preconditions and the scheduling consequences automatically monitored and displayed by PLANWISE include:

- skills and capabilities of people and equipment,
- preferred equipment or drivers,
- availability of people and equipment,
- transportation time for equipment,
- time frames.

Transparency

PLANWISE provides insight into scheduling and progress in a variety of ways, making order acceptance, scheduling and execution easier to manage. This places your organization in a much stronger position to respond to requirements or disruptions. Moreover, scheduling and realization details constitute a wealth of valuable management information.



Transferability

Working with PLANWISE means that your scheduling process and corresponding preconditions are well documented and safeguarded. This makes it easier to transfer your scheduling activities to staff and greatly reduces your organization's dependence on the knowledge and presence of one or a handful of planners.

About ORTEC

ORTEC is one of the largest providers of advanced planning and optimization software solutions and consulting services. Our solutions result in optimized fleet routing & dispatch, vehicle and pallet loading, workforce scheduling, delivery forecasting and network planning. ORTEC provides both best-of-breed, custom made and SAP® certified solutions, supported by strategic partnerships. ORTEC has over 800 customers worldwide, 600 employees and several offices in Europe and North America.

www.ortec.com

United States

+1 (678) 392 3100

Deutschland

+49 (0) 4431 7377 0

Nederland

+31 (0)182 540 500

België/Belgique

+32 (0)16 244 220

France

+33 (0)1 44 25 05 25

International

+31 (0)182 540 500