

SHORTROUTE

Track & Trace Program for your Entire Fleet

Transport companies, passenger transporters and companies providing service engineers face a variety of difficulties in developing efficient routes for their entire fleet on a daily basis. It is well known that, due to last minute changes and urgent orders, even the best routes must be updated regularly. Therefore, it is extremely valuable to have the ability to pinpoint the exact location of your entire fleet. However, this can be very difficult, as it requires frequent contact with your drivers. **SHORTROUTE**, the Track & Trace system of ORTEC, was created to make this process more manageable.

Why SHORTROUTE?

SHORTROUTE provides real time, updated information regarding the status of your fleet, 24 hours per day, 7 days per week. In conjunction with the GPS coordinates from your fleet, you are continuously and automatically able to track the movements of the fleet via graphical displays. This way, you have the ability to react immediately to sudden changes in planning - without losing time looking for the coordinates of your drivers.

SHORTROUTE saves time and money for planners by reducing the frequency of contacting the drivers. Furthermore, because data can be directly imported and used, you can connect SHORTROUTE to multiple databases.

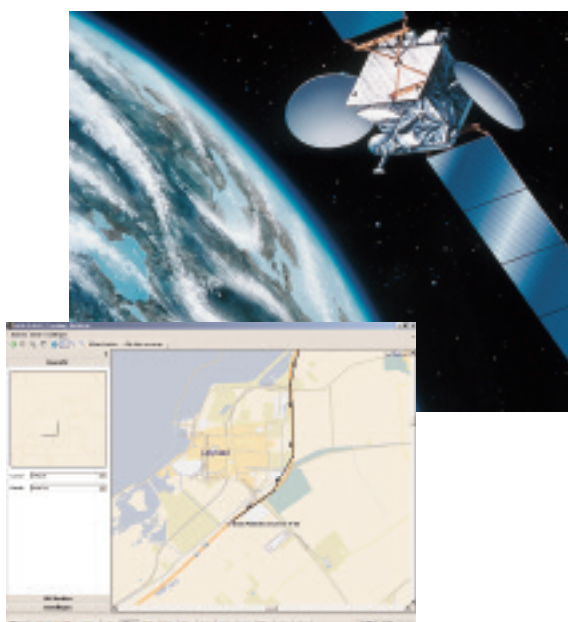
Examining and Controlling Routes

SHORTROUTE provides a clear view into the planning process and allows users to verify that routes taken were completed according to plan. SHORTROUTE instantly informs users of changes via detailed maps, accurate road descriptions and the GPS coordinates from the vehicles. Therefore, at any moment, planners can track the positions of each vehicle on their screens. As a result, planners get the most accurate information - so they can make the right decisions.

Distance and Cost Calculations

SHORTROUTE consists of several extensive standard functions. In addition, ORTEC developed the "Distance Server", a tool that gives planners direct insight into the distances, costs and time associated with every transport. Planners can use these results for the pre-planning process because they know the exact distance each vehicle should travel.

During a vehicle's route, you can view the distance it has traveled, as well as how far it still has to go. This has proven very useful in the planning of urgent orders. The Distance Server immediately allows planners to see which vehicle is in a customer's vicinity or which vehicle can travel the least distance to meet the transportation needs.



Distance Server can also be used independently of your planning system. Therefore, costs and distances can be calculated for any particular route without importing it into SHORTROUTE. In turn, planners are able to select the fastest, shortest and least expensive possibility.

The perfect combination

With the combination of SHORTROUTE and the Distance Server, you will have the right tools to make quick and accurate pre-calculations of all planned routes.



SHORTROUTE Functionality:

- Zoom to street level;
- Examine maps full screen;
- Measure the distance between the point of departure and arrival;
- Get insight into where every vehicle has been;
- Visualize all or a selection of moving vehicles;
- Select which days and hours you want to see;
- See all reports or the last report about a vehicle;
- Center the map based on the last position of a selected vehicle;
- Automatically charge toll collections.

www.ortec.com

United States
+1 (678) 392 3100

Deutschland
+49 (0) 4431 7377 0

Nederland
+31 (0)182 540 500

België/Belgique
+32 (0)16 244 220

France
+33 (0)1 44 25 05 25

International
+31 (0)182 540 500