

ORTEC Shortrec Trip Routing & Scheduling

Optimize Your Transport and Distribution

ORTEC Shortrec's automated trip routing and scheduling system, ORTEC Shortrec, optimizes transport and distribution planning. The optimum allocation of your vehicle fleet by efficiently filling in trips, combined with the fastest routes, enables you to agree more accurate delivery times with your clients, while you are able to serve more clients with the same number of staff and equipment. In addition, you can determine what the best planning is in your unique situation by comparing various scenarios. By using ORTEC Shortrec you raise your level of service and save on mileage costs and equipment, while raising your planning to a higher level.



Profitable planning

Is drawing up the trip and route plans a regularly recurring stumbling block in your company as well? Do you want to serve your clients in the best way possible, at the time at which they request that from you? Do the Driving Hours Act, the capacities of your vehicle fleet and the wishes of your staff form the largest bottlenecks? If that is the case, ORTEC Shortrec is the ideal solution for your business.

ORTEC Shortrec is an automated planning system that takes all of your wishes and requirements into account, while you are able to generate a plan for the next day or the next week in no time at all. This plan can then be looked at in various ways and can be adapted according to the planner's wishes. It is possible to see all vehicles with their drivers and corresponding trips at a glance. Orders can simply be moved from one vehicle to another using a drag-and-drop function. It is also possible to display all trips on a digital map. You can then look at the route for each individual trip right down to street level and modify it as desired. Is it more convenient to schedule the lunch break an hour earlier or later? This can be

done by dragging this break to a later or earlier time in the trip. The scenario-analysis option enables you to draw up various plans and to compare them with each other. Do you want to raise your level of service? Drive fewer kilometers? Use as few vehicles as possible? You can choose the best plan depending on your own requirements.

Real time monitoring

But however perfect the planning may be, during the course of the plan situations always present themselves that require immediate adjustments. A traffic jam, a faulty truck, longer loading and unloading times than those planned, etc. ORTEC Shortrec enables you to react to these straightaway. The traffic-jam module enables you to move driving times from one location to another, so that you can see in the plan itself where the problems are occurring. Loading and unloading times can be adjusted per client. Is the driver incurring a delay? Then you can update the plan by pressing the button. However, it is also possible, according to your own views, to, for example, adjust the break times in the scheduling board in order to get the plan back on track again.

Detailed reports and link

It is easy to communicate the plan in advance and analyze it afterwards based on detailed reports. How many kilometers were driven, how much overtime was worked, were all servicelevels achieved? Everything can be found in the detailed reports ORTEC provides you. If you want you can export the reports straight into Excel.

Do you need a link to your own back-office system or database? Links to the familiar ERP, TMS and WMS systems are easily achieved. Do you have a different system? Then we would be happy to look into what your options are.

Various extra modules

ORTEC Shortrec is built in a modular structure and it is therefore easy to configure you own specific situation and wishes.

Some examples of extra modules:

- Plans for one or for several days
- Road networks (4/5/6-figurepost code or building level)
- From 2D loading to 3D integration
- Pick-ups and deliveries
- Traffic-jam issues
- Processing status reports from board computers, PDAs and GPS positions
- Hooking up and unhooking trailers
- Single or multi-depot
- Multi-user or multi-site
- Single or multi-compartments
- National & international transport
- Time windows, such as opening hours and waiting times
- Charter and subcontracting issues

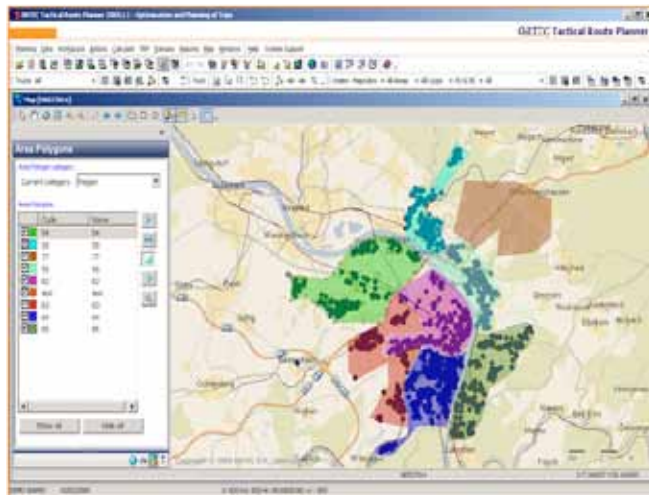
A list of the benefits of ORTEC Shortrec

Let us set out the benefits of ORTEC Shortrec once again for you:

- Increased service levels for your clients
- More efficient use of your vehicle fleet
- Reduction of the number of kilometers
- Reduction of work pressure and working time of your planners
- Greater understanding of transport costs
- Understanding of tender possibilities
- Link to your own back-office system
- Graphical display on map and scheduling board for improved understanding of the planning
- Monitoring prior to, during and after the planning

More information?

Interested? Then do not hesitate to contact us for a meeting with one of our sales representatives. They will be pleased to show you ORTEC Shortrec's numerous possibilities as well as our other products and services.



info@ortec.com - www.ortec.com

North America +1 (678)392-3100

The Netherlands +31 (0)182 540 500

Belgium +32 (0)16 244 220

France +33 (0)1 44 25 05 25

Germany , Austria and Switzerland +49 (0) 4431 7377 0

Central and Eastern Europe +40 (0)21 31 10 227

United Kingdom and Ireland +44 (0)845 1800 689

Australia/New Zealand +61 (0) 448 670 765

Scandinavia +45 (0)8896 9880

Asia Pacific +65 (0) 6725 6468

International +31 (0)182 540 500