



Resource Planning and Optimization

Advantages of ORTEC Solutions

The use of ORTEC Resource Optimization solutions results in:

- cost savings of 5-15% because of improved efficiency
- increased customer service
- a faster, more transparent and more accurate planning process
- an improved administrative process
- highly intuitive and well-organized management information

ORTEC Professionals in Planning

ORTEC is one of the largest providers of advanced planning and optimization software solutions and consulting services. Our solutions result in optimized fleet routing and dispatch, vehicle and pallet loading, workforce scheduling, delivery forecasting and network design. ORTEC provides best-of-breed, custom made and SAP® embedded solutions, supported by strategic partnerships. ORTEC has over 800 customers worldwide, more than 700 employees and several offices in North America and Europe.

Since 1981, our efforts have led to the development of various standard software products and professional consulting services for advanced resource planning and optimization that are being successfully used worldwide.



By deploying our knowledge and solutions, our customers are able to achieve considerable savings and increased revenues. We have an extensive customer base in a large number of industries, including:

- trade, transport and logistics
- oil, gas and chemicals
- consumer packaged goods
- health care
- professional and public services

**Do you want to know how ORTEC
can help you save cost and
increase revenue?
Just give us a call today!**

**“By deploying our knowledge and
systems, our customers are able to
achieve considerable savings.”**



ORTEC Vehicle Routing and Dispatch

Route optimization on strategic, tactical and operational level

The ORTEC Vehicle Routing and Dispatch solution suite offers extensive options and modules for a wide range of planning environments, including:

- pick-up and delivery operations
- national and international transport
- container, tank and bulk transport
- strategic, tactical, operational planning and real-time execution

The ORTEC solution suite can easily be integrated with ERP, TMS, WMS, CRM and mobile communication systems.

Due to a modular design, The ORTEC Vehicle Routing and Dispatch solutions are easy to use for operational, tactical and strategic purposes. Our powerful algorithms automatically calculate the optimal schedule, which is presented to the user in a flexible and user-friendly way.

The well-organized work schedule, geographical map, planning board (Gantt Chart) and comprehensive management information reports contribute to sound planning decisions. The integrated tracking and tracing functionality ensures your schedule is always up to date and provides immediate insight into 'planned versus actual'.

Over the years, our solutions have also become an indispensable engineering tool to support topics like tender evaluation and rate negotiations. ORTEC Vehicle Routing and Dispatch can easily be combined with the ORTEC Pallet and Load Building and ORTEC Workforce Scheduling solutions.

ORTEC Pallet and Load Building

Improve asset utilization to increase sales and reduce shipping costs

The ORTEC Pallet and Load Building solution suite supports organizations in the optimization of carton, pallet, trailer and container load building processes. The software quickly calculates the optimal loading arrangement of any type of pallet or transport unit and presents the results in intuitive pictures. The system can be integrated with all common WMS, TMS and ERP systems and is also available as embedded SAP® software solution.

Typical Pallet and Load Building benefits:

- 5-15% improvement for outbound, inbound and stock transfer loads
- ability to up-sell customer orders
- incorporate customer and destination requirements into loading process
- warehouse time savings

Through integration of ORTEC Pallet and Load Building with ORTEC Vehicle Routing and Dispatch, ORTEC offers an end-to-end solution that optimizes your logistics operation from both a loading as well as a fleet routing perspective.

The unique integrated tracking & tracing module shows the current status of the planning and provides immediate insight into planning versus realization.



Workforce Scheduling

Maintain a happy and efficient workforce

It is not easy to create a well-balanced employee schedule. The demand for skilled employees must be satisfied as effectively and efficiently as possible. Furthermore, working hours legislation, applicable labor agreements, and individual wishes of your employees must be incorporated in your schedule at the same time.



The ORTEC Workforce Scheduling solution suite offers you the possibility of creating shift rosters in a rapid and well-organized manner. Based on the applicable rules, the system can generate a draft schedule or can create a schedule by hand until a roster is produced that fully meets your requirements. ORTEC Workforce Scheduling has modules for payroll, invoicing, time & attendance registration, flexible capacity pools, workstation assignment and employee self-rostering (via internet or intranet). With the available standard interfaces to all major HR and Payroll systems, ORTEC Workforce Scheduling is the right solution for you.

ORTEC Service Planning

Increase service levels while controlling costs

The ORTEC Service Planning solution suite has been designed to support (automated) planning and real-time scheduling of your field workers. Our solution will increase efficiency by matching work to employee rosters and skills, while creating efficient service routes for your fleet. ORTEC Service Planning can easily be connected to all common ERP, CRM and mobile communication systems. As a result, the data exchange contributes to an efficient business process.

By using ORTEC Service Planning, you have immediate, up-to-date access about:

- all completed, current and scheduled
- employee expertise, skills and calendars
- vehicle status and location
- necessary tools and materials to complete the job

Immediate benefits of ORTEC Service Planning solution include:

- increased number of visits per employee
- reduction in vehicle distance driven
- increased customer service
- well-organized resource planning process

More visits per employee with
ORTEC Service Planning

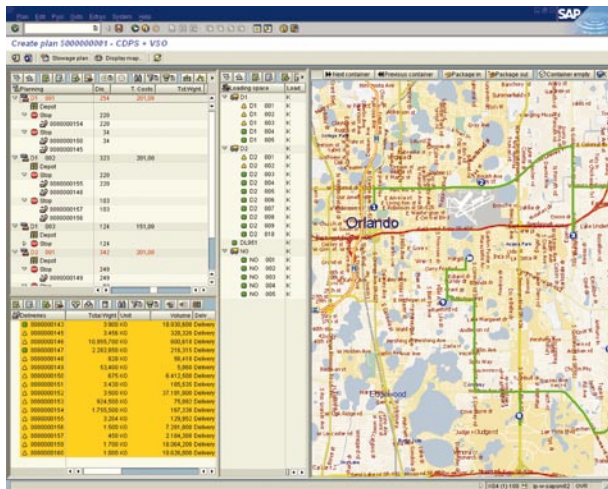


ORTEC Solutions are easy to combine and integrate

Based on the unique and open system architecture, ORTEC solutions can be easily combined and integrated into your existing application infrastructure.

A successful example of a fully integrated solution suite is ORTEC LEO (“Logistics Execution Optimizer”). This solution suite is directly embedded in SAP®, offering both vehicle routing and dispatch, as well as pallet and load building functionality. ORTEC LEO consists of the following modules:

- Carton Packing and Optimization
- Pallet Packing and Optimization
- Vehicle Space Optimization
- Route Optimization



The ORTEC LEO solution suite optimization components are completely embedded into SAP® utilizing the SAP® user interface and all master and transaction data required are managed and stored in SAP®.

More ORTEC Software Solutions

Besides the ORTEC solution suites, ORTEC also offers sophisticated planning and optimization software and services in the following areas:

- Demand Forecasting and Vendor Managed Inventory (VMI)
- Production and Project Planning
- Revenue Management

ORTEC's Logistics Consulting

It is essential for companies to have their operations and business processes organized as efficiently as possible. ORTEC can help you find the best solution to face your business processes. For more than 25 years, ORTEC has built a strong reputation in the area of business consulting. Our recommendations are based on extensive business process knowledge, solid mathematical systems and algorithms. Whether you are a small regional company or a multinational corporation, the experts at ORTEC can identify unique opportunities to improve your logistics network, increase efficiency, and decrease costs. Worldwide numerous companies have experienced savings of up to 20% after implementing the ORTEC recommendations.

On a strategic level ORTEC can help you to answer the following questions:

- what is the optimal supply chain for your company?
- how to optimize and align territories and depots best?
- what are the consequences of a merger or an acquisition for logistics networks?
- how to optimize the logistics process taking market expansion into account?

On an operational level ORTEC helps you to answer the following questions:

- what is the best way to evaluate distribution strategies?
- what is the optimal fleet size and home location?
- should we use contractors or company owned resources?
- what are optimal time windows for your deliveries?

ORTEC's Implementation, Training and Support Services

A professional and dedicated team focused on achieving results

ORTEC applies a implementation strategy where we work closely together with our client during the implementation of our solution, considering client specific requirements as well as industry requirements.

The ORTEC implementation strategy is designed such that ORTEC will provide the relevant software solutions, expert knowledge, industry best practices, as well as professional implementation and support services. The client is expected to play an active role in the implementation project and particularly provide insight into the client's industry, operational drivers, project objectives and general business constraints.

ORTEC takes pride in:

- research and understanding of not only the industry's but also your specific concerns
- ongoing development of our software solutions and professional implementation that meet your requirements
- sharing our professional and industry expertise to maximize your benefits
- ongoing development of our training programs, our worldwide support services and software updates and releases

With more than 25 years of implementation experience worldwide and over a 1000 projects completed successfully, ORTEC is the partner you can count on.

www.ortec.com
info@ortec.com

North America +1 (678) 392 3100

Deutschland +49 (0) 4431 7377 0

Nederland +31 (0)182 540 500

België/Belgique +32 (0)16 244 220

France +33 (0)1 44 25 05 25

Central and Eastern Europe +40 (0)21 31 10 227

United Kingdom and Ireland +44 (0)24 7632 3218

International +31 (0)182 540 500